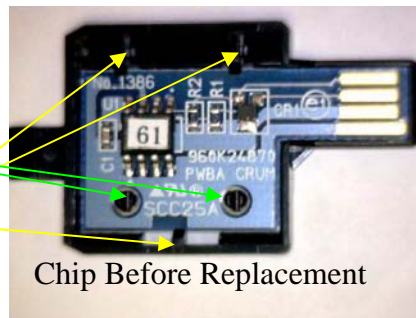


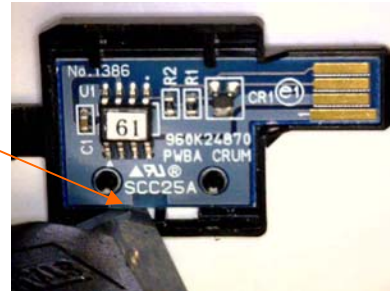
Dell ®1320 - Chip Replacement

19 Dec 2007

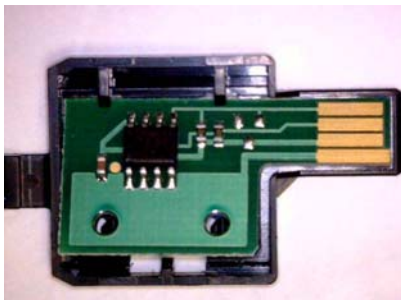
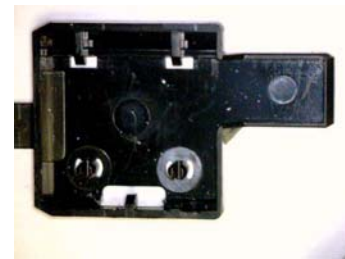
The chip is held in place by locating it on 2 pillars (green) and under 3 clips (yellow)



Using a hobby knife or similar place the blade under the pillar side of the board and GENTLY lever the board away from the fixing clip on that side



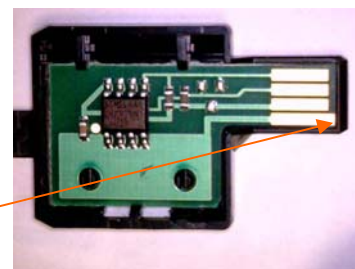
The board can now be lifted up and away from the last two retaining clips leaving the empty holder



Reverse the procedure to install the new chip. Place the board edge under the two retaining clips on the holder.

Then press the opposite edge down over the locating posts and under the third retaining clip on the posts side of the holder.

After doing this, ensure that the contact part of the board is securely in the holder so as not to obstruct entry when the cartridge is replaced in the machine.



OEM Cartridge Part Nos:-

Black- 593-10258, Cyan- 593-10259, Magenta- 593-10261, Yellow-593-10260